

ONLINE PHARMACY MANAGEMENT SYSTEM

introduction

pharmacies have been using the same old system for years in which you get prescriptions from the doctor who will give to your local pharmacist. The pharmacist then checks the list and give you the medication. Even through the pandemic it stayed the same.

A new system is needed in which the patients medication data is stored in a database. The system will be a client-server application in which the web interface acts as a client that can request information from the server.

Problem

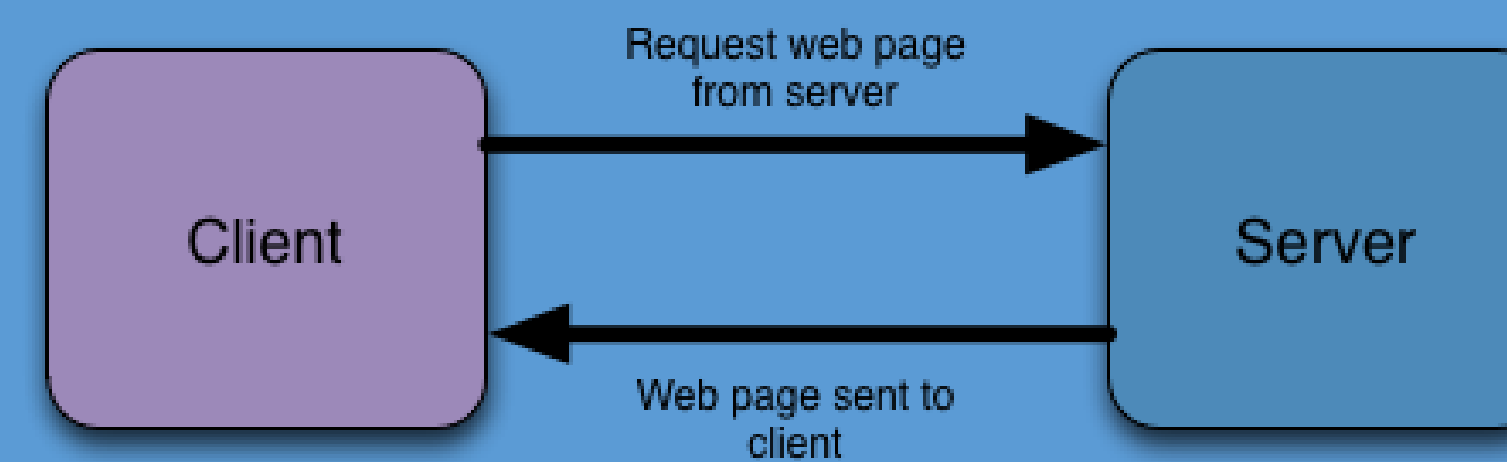
One problem with this list is that it is always done automatically so you will get the same amount of medication each time even if you don't need it. The second problem is that not all the pharmacists are permanent so they cant update or delete the stocks without the login of the Main pharmacist. They also needs to be able to register new patients

Solution

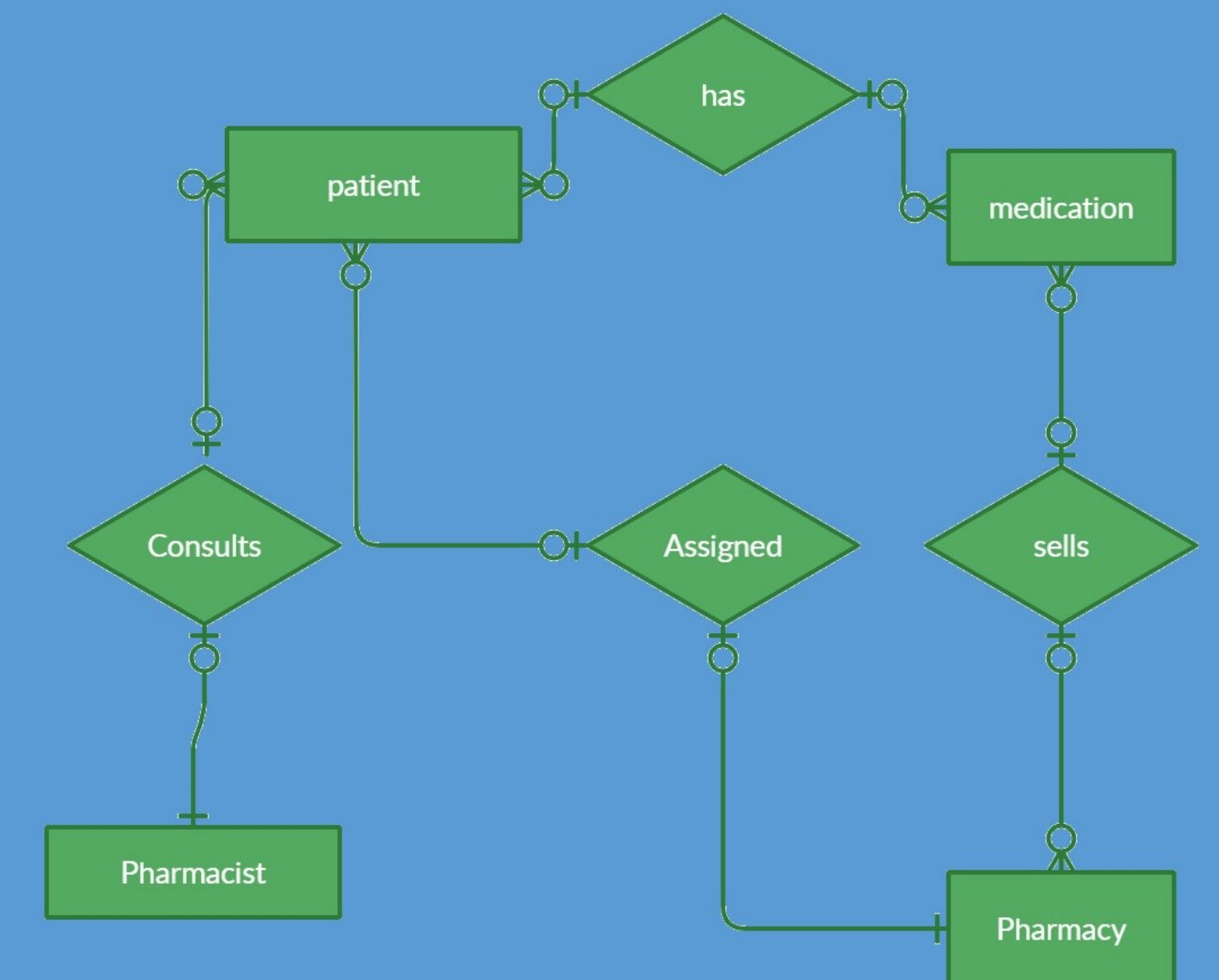
- The new system allows patients to edit your order before collection
- Be able to add extra non prescribed items to the list.
- pharmacist will be also to add, delete update the medication
- Register new patients
- Register new pharmacists
- Pay online for medication

Server-side application

Server-side processing is used to interact with permanent storage like databases or files. The server will also render pages to the client and process user input. Server-side processing happens when a page is first requested and when pages are posted back to the server .



entity-relationship diagram



System

This shows patients can check their medication and book the medication they need.

The screenshot shows a web interface titled "Medicine List". It features a search bar with the placeholder "Enter Name" and a "Search" button. Below the search bar is a table with the following columns: SELECT, S.NO., NAME, CATAGRY, COMPANY, PRICE, QUANTITY, DESCRIPTION, and BOOK. There are two rows of data in the table, each with a "Book" button in the "BOOK" column. At the bottom of the table are "Previous" and "Next" navigation buttons.

SELECT	S.NO.	NAME	CATAGRY	COMPANY	PRICE	QUANTITY	DESCRIPTION	BOOK
<input type="checkbox"/>	1	PHP	FDFD	cc	1200	32	DDD	<input type="button" value="Book"/>
<input type="checkbox"/>	2	drug demo	demo	sipia	345	24	vdmv	<input type="button" value="Book"/>

